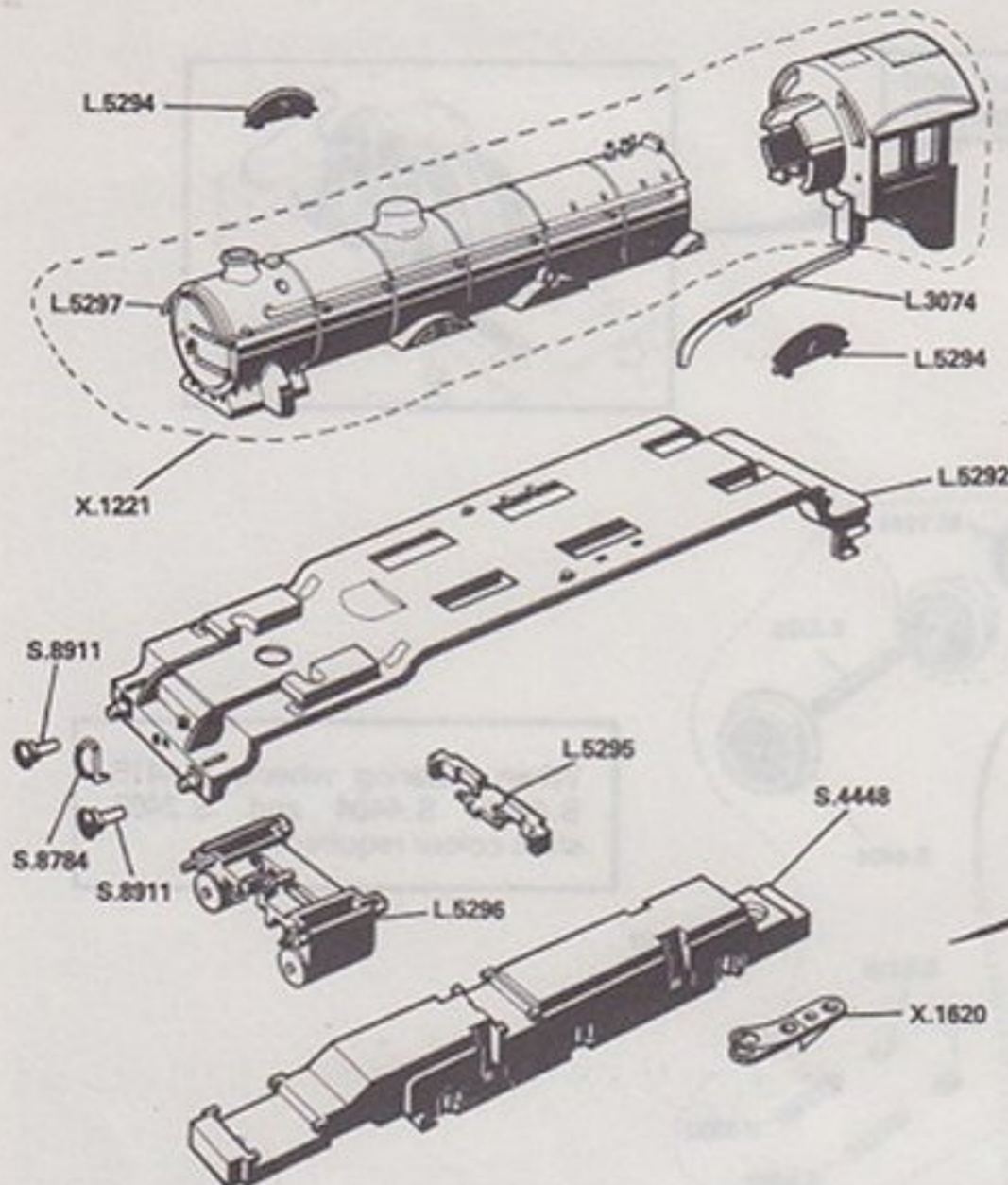


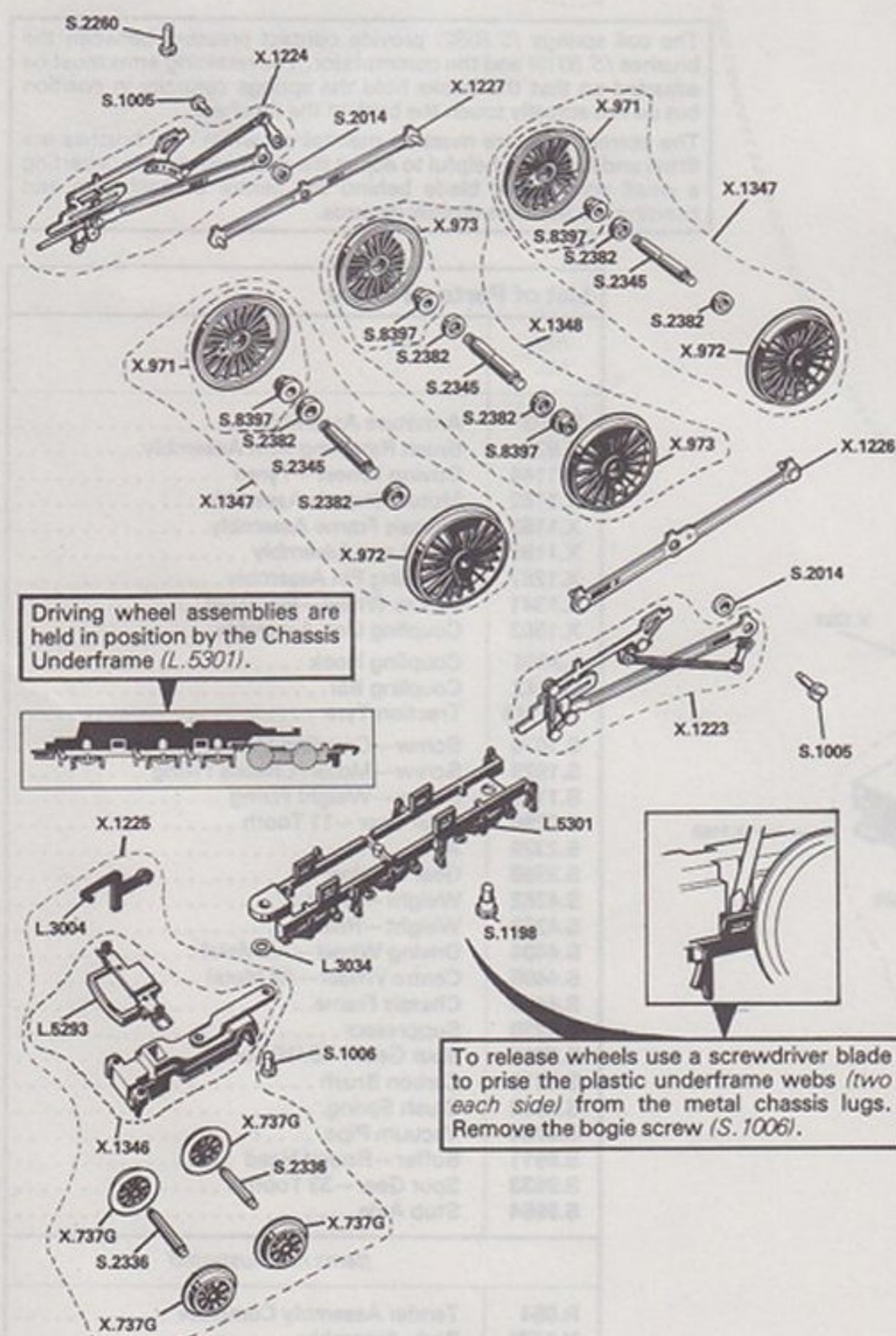
**4-6-0 L.N.E.R. LOCOMOTIVE—  
R.053 "Manchester United"**

See overleaf for Tender

Powered by Tender  
Drive. See overleaf.



When locomotive and tender are coupled the contact pin on the tender must be firmly pressed down so that it passes through the spring contact underneath the locomotive drawbar.



Driving wheel assemblies are held in position by the Chassis Underframe (L.5301).

To release wheels use a screwdriver blade to prise the plastic underframe webs (two each side) from the metal chassis lugs. Remove the bogie screw (S.1006).

**List of Parts—Locomotive**

Ref. No.	Item
X.737G	Bogie Wheel
X.971	Driving Wheel—Bushed
X.972	Driving Wheel—Unbush Type
X.973	Driving Wheel—Cranked
X.1221	Body Assembly
X.1223	Valve Gear Assembly—L.H.
X.1224	Valve Gear Assembly—R.H.
X.1225	Bogie Assembly
X.1226	Coupling Rod—L.H.
X.1227	Coupling Rod—R.H.
X.1346	Bogie Frame Assembly
X.1347	Driving Wheels/Axle Assembly
X.1348	Driving Wheels/Axle Assembly—Cranked
X.1620	Drawbar Assembly
L.3004	Coupling Hook
L.3034	Washer—Bogie
L.3074	Reversing Lever
L.5292	Footplate
L.5293	Coupling Bar & Steps
L.5294	Nameplate
L.5295	Motion Bracket
L.5296	Cylinder Block
L.5297	Handrail with Stanchions
L.5301	Underframe
S.1005	Screw—Valve Gear
S.1006	Screw—Bogie
S.1198	Screw—Drawbar
S.2014	Distance Piece
S.2260	Screw—Smokebox
S.2336	Axle—Bogie
S.2345	Axle—Driving Wheels
S.2382	Axle Bearing
S.4448	Chassis
S.8397	Insulating Bush
S.8784	Vacuum Pipe
S.8911	Buffer—Round Head
Items not illustrated	
M.1033	Locomotive Nameplate Label (Manchester United)
M.1034	Alternative Nameplate Labels
M.1120	Alternative Cab Number Transfer Sheet
S.6390	Fireman
S.6391	Driver

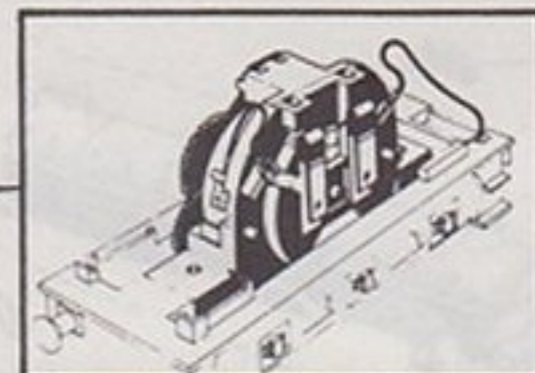
**SERVICE SHEET No. 110A**  
Issued October 1982

**HORNBY HOBBIES** Hornby Service Centre, Westwood, Margate, Kent, CT9 4JX, England.

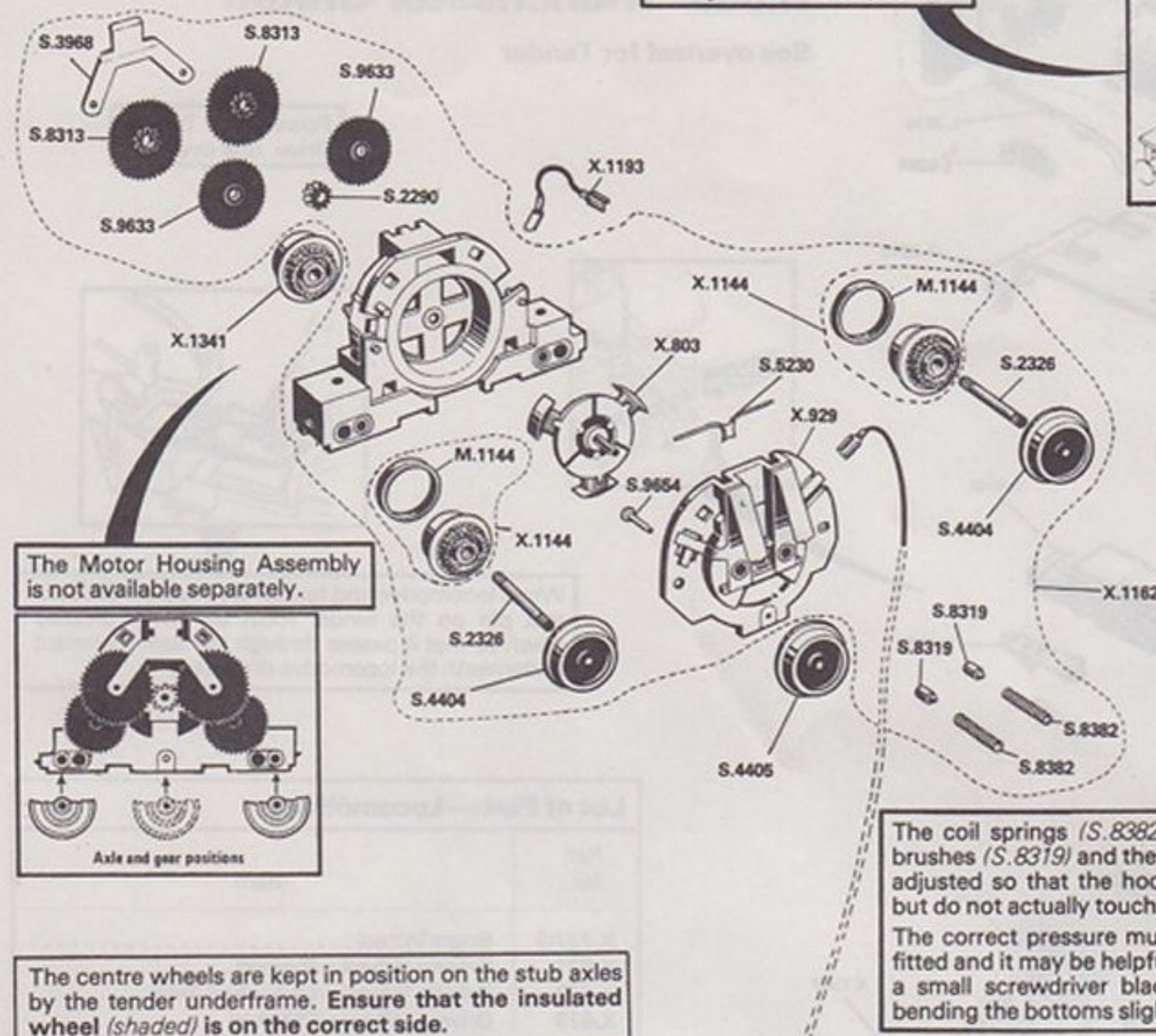
**TENDER FOR R.053 "Manchester United"**

See overleaf for Locomotive

Brush gear, suppressor and wiring in assembled position.



When ordering wheels S.4415, S.4405, S.4404 and S.2465, state colour required.



The Motor Housing Assembly is not available separately.



The centre wheels are kept in position on the stub axles by the tender underframe. Ensure that the insulated wheel (shaded) is on the correct side.

The coil springs (S.8382) provide contact pressure between the brushes (S.8319) and the commutator. The retaining arms must be adjusted so that the hooks hold the springs centrally in position but do not actually touch the back of the brushes. The correct pressure must be maintained when new brushes are fitted and it may be helpful to adjust the retaining arms by inserting a small screwdriver blade behind the centre of each arm and bending the bottoms slightly inwards.

**List of Parts—Tender**

Ref. No.	Item
X.803	Armature Assembly
X.929	Brush Retaining Arm Assembly
X.1144	Driving Wheel—Tyred
X.1162	Motor/Chassis Assembly
X.1163	Chassis Frame Assembly
X.1193	Wire Lead Assembly
X.1287	Coupling Pin Assembly
X.1341	Centre Wheel—Insulated
X.1502	Coupling Unit Assembly
L.3004	Coupling Hook
L.5442	Coupling Bar
M.1144	Traction Tyre
S.1070	Screw—Coupling Unit Assembly
S.1079	Screw—Motor/Chassis Fixing
S.1180	Screw—Weight Fixing
S.2290	Spur Gear—11 Tooth
S.2326	Axle
S.3968	Gear Retainer
S.4352	Weight—Front
S.4353	Weight—Rear
S.4404	Driving Wheel—All Metal
S.4405	Centre Wheel—All Metal
S.4455	Chassis Frame
S.5230	Suppressor
S.8313	Spur Gear—40/10 Tooth
S.8319	Carbon Brush
S.8382	Brush Spring
S.8784	Vacuum Pipe
S.8911	Buffer—Round Head
S.9633	Spur Gear—33 Tooth
S.9654	Stub Axle
Items not illustrated	
R.054	Tender Assembly Complete
X.1471	Body Assembly
L.5048	Handrail with Stanchions—Side
L.5212	Handrail with Stanchions—Rear

Modifications are made to models from time to time. If a spare part is required which does not coincide with the illustration, a full description should be given and, if necessary, a sketch or sample should accompany the order.